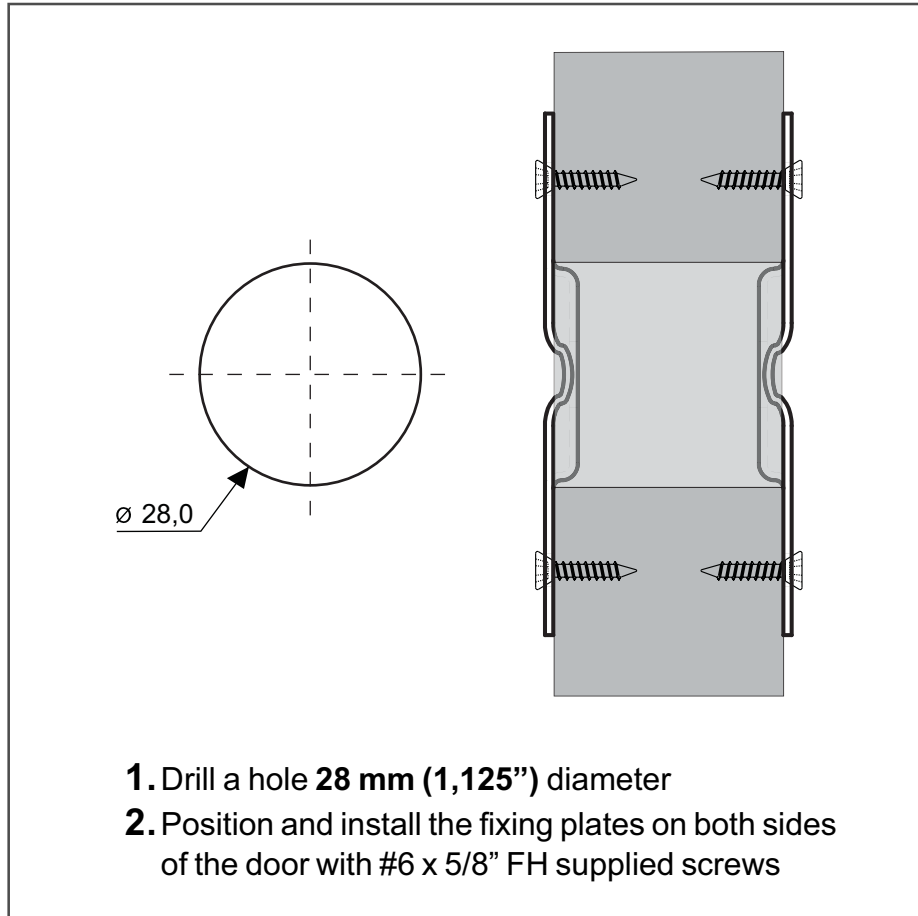


INSTALLATION OF THE FIXING PLATES FOR DUMMY HANDLE SETS

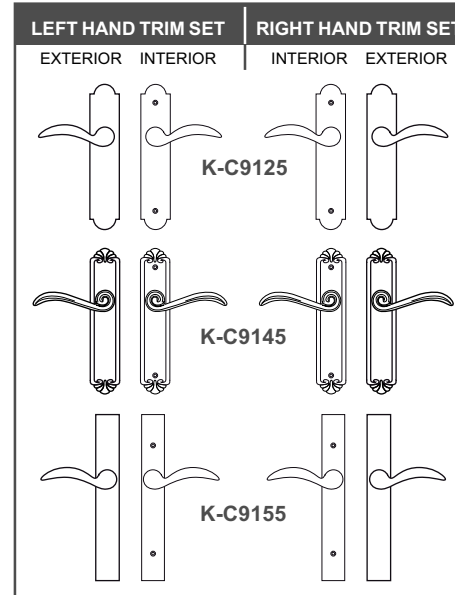


FOR THESE HANDLE SETS:

Bronze (15) - Dark Bronze (5) - Black (6)

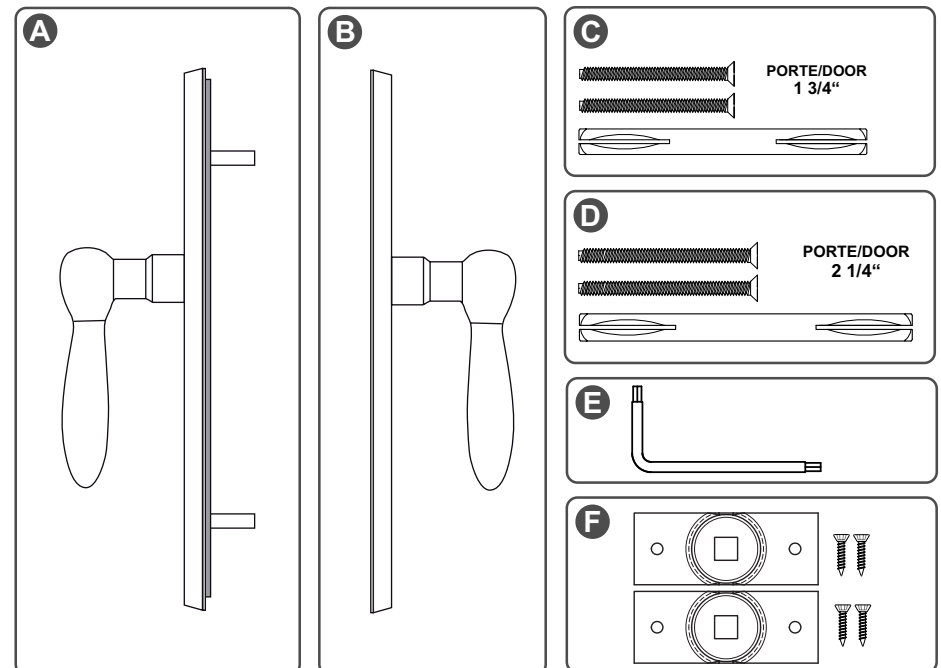
Handle set finishes are handmade, thus slight variations of shading and finishes are to be expected. It is not possible for FERCO to guarantee specific uniformity of these shades and finishes.

TRIM SETS ASSEMBLY INSTALLATION INSTRUCTIONS



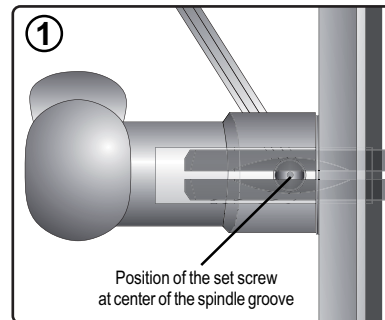
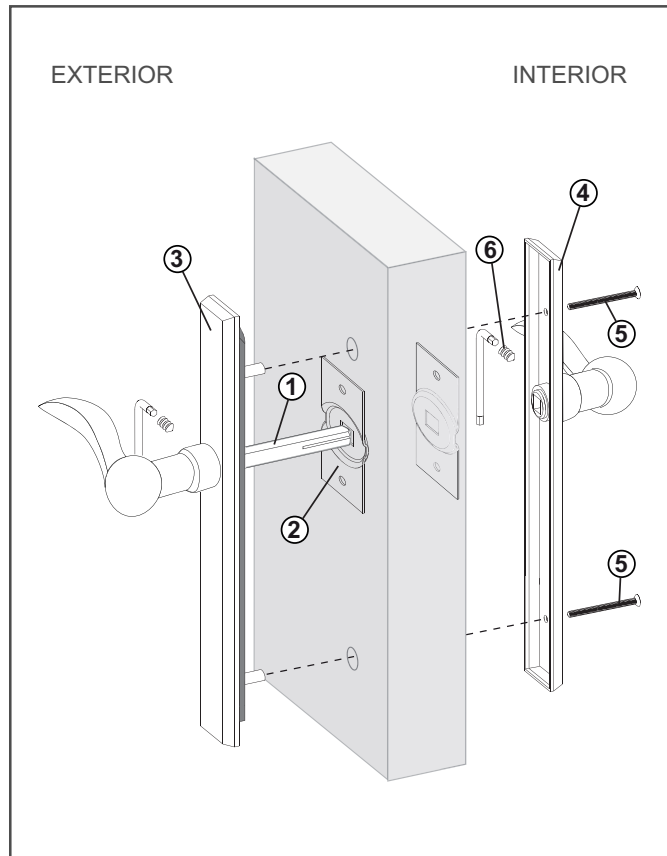
BOX CONTENTS:

- A 1 exterior set:**
assembly blank with handle and gasket
- B 1 interior set:**
assembly blank and screw holes with handle
- C 1 bag with 1 spindle 110 mm and 2 M4 x 50 mm installation screws for 1 3/4" door**
- D 1 bag with 1 spindle 120 mm and 2 M4 x 60 mm installation screws for 2 1/4" door**
- E 1 bag with 1 Allen key**
- F 1 bag with 2 fixing plates and 4 flat head screws**

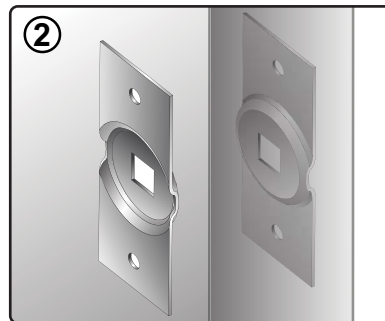


INSTALLATION LEFT OR RIGHT HAND TRIM SET FOR INACTIVE DOOR

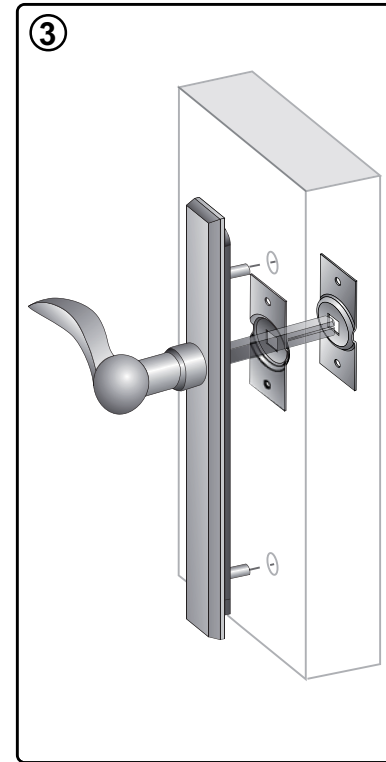
» LEFT HAND SHOWN



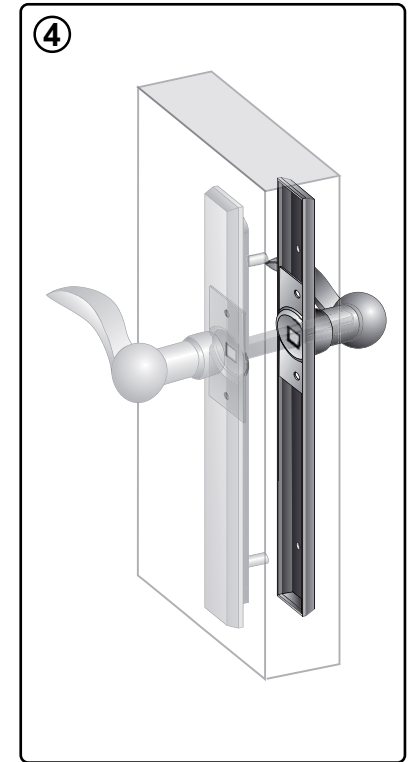
Insert the spindle into the square hole of the exterior handle and tighten the set screw on the spindle with the Allen key



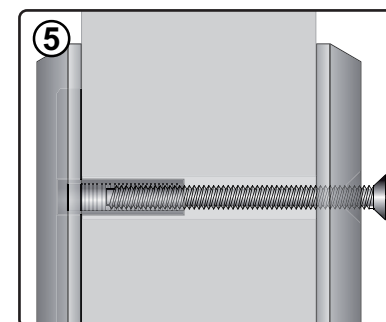
Install the fixing plates on both sides of the door with the supplied screws



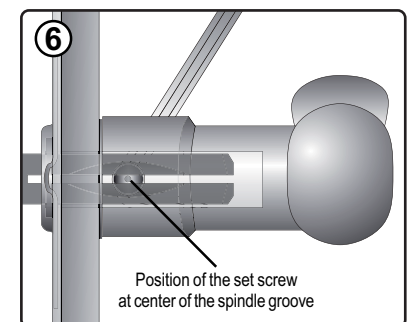
Position the exterior handle assembly into the holes and push the spindle through the square holes of the fixing plates



Set the interior handle assembly with the spindle



Fasten with two installation screws according to the door thickness



Tighten the set screw of the interior handle on the spindle with the Allen key

TROUBLESHOOTING

- **PLATES ARE NOT TIGHT AGAINST THE DOOR**
 - Installation screws are probably too long, file them down in short steps.