

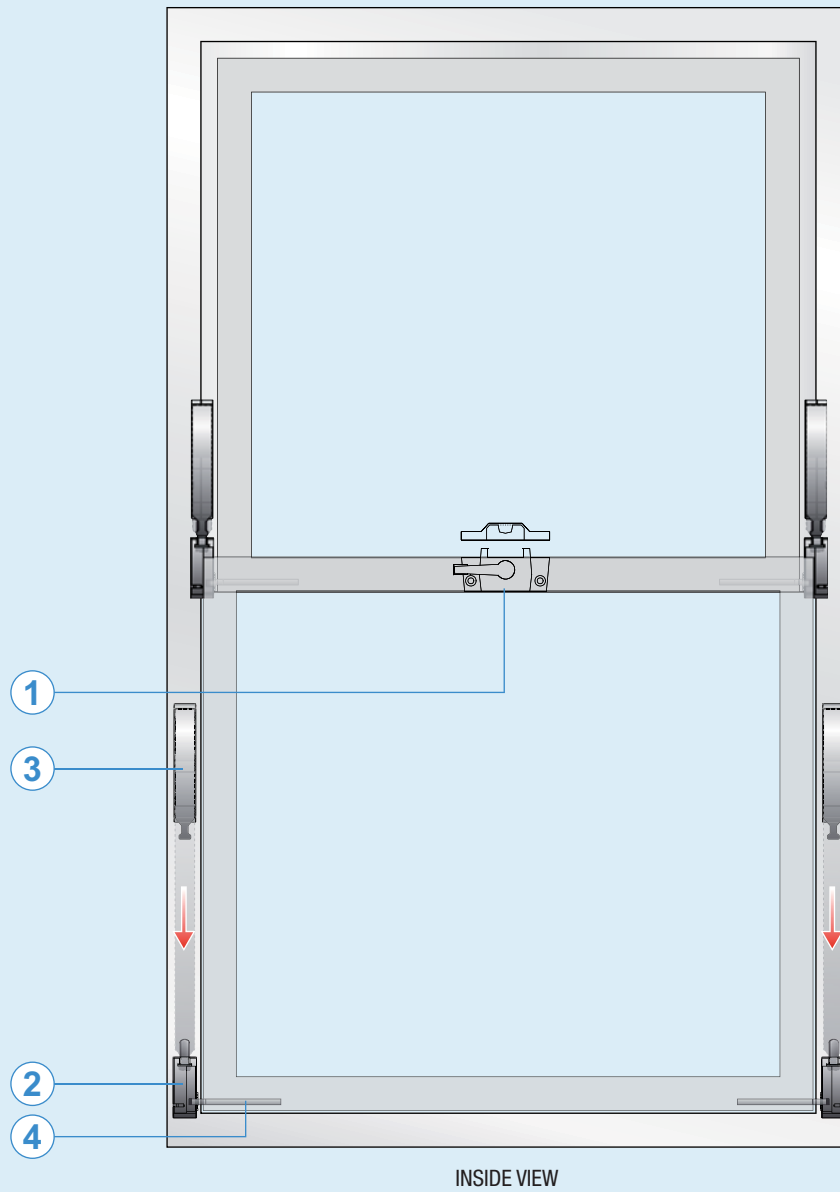
# 01

## Single & double hung hardware



### Section 1 – Hardware

Sash locks	01.1.3
Keepers for sash locks	01.1.4
Side locking brake shoe and retainer clips	01.1.6
Front & side locking brake shoe and retainer clip	01.1.7
Constant force coil springs	01.1.8
Cassettes with constant force coil springs	01.1.9
Monobloc cassettes for constant force coil springs	01.1.10
Standard support for constant force coil springs	01.1.11
Accessories	01.1.12



**Constant force balance system**

Description	Page
1 Sash locks and keepers	01.1.3
2 Brake shoe and retainer clips	01.1.6
3 Coil springs and cassettes	01.1.8
4 Pivot bar	01.1.12

## Sash lock



### Additional information

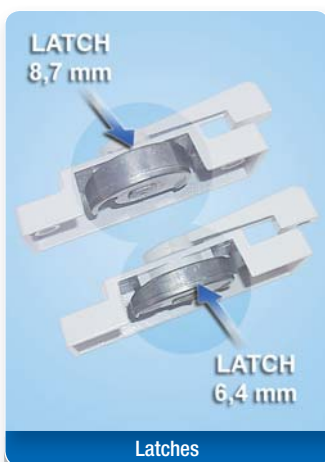
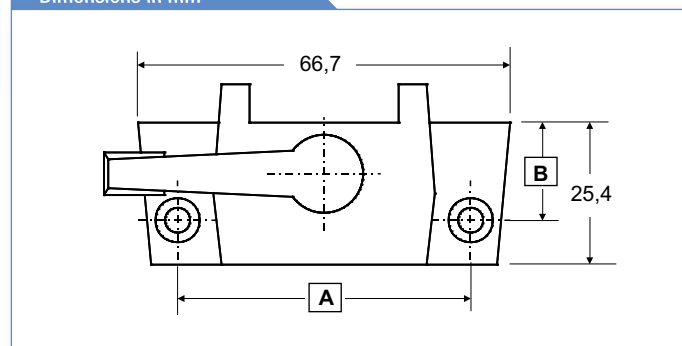
- Sturdy zinc die cast construction
- Choice of two mounting hole locations:  
6-C1181 (Dim. B = 11 mm)  
6-C1183 (Dim. B = 18 mm)
- Alignment guides align lock to keeper perfectly and provide additional security
- Used with keepers:  
9-C1181-2C-0-7  
9-C1183-2C-0-7

### Sash locks with alignment guides

Description	Color	PU	Part Number
Lock with 8,7 mm latch Dim. A = 52 mm Dim. B = 11 mm	White	200	6-C1181-2C-0-7
Lock with 8,7 mm latch Dim. A = 52 mm Dim. B = 18 mm	White	200	6-C1183-2C-0-7

\* = Color      PU = Packaging Unit

### Dimensions in mm



### Additional information

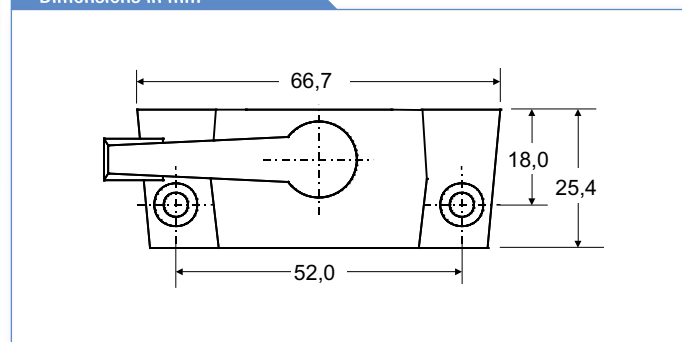
- Sturdy zinc die cast construction
- Used with keepers:  
9-C1184-2C-0-7  
9-C1185-2C-0-7  
9-C1186-2C-0-7

### Sash locks

Description	Color	PU	Part Number
Lock with 8,7 mm latch	White	200	6-C1182-2C-0-7
Lock with 6,4 mm latch	White	200	6-C1184-2C-0-7

\* = Color      PU = Packaging Unit

### Dimensions in mm



## Sash lock keepers



9-C1181-2C-0-7

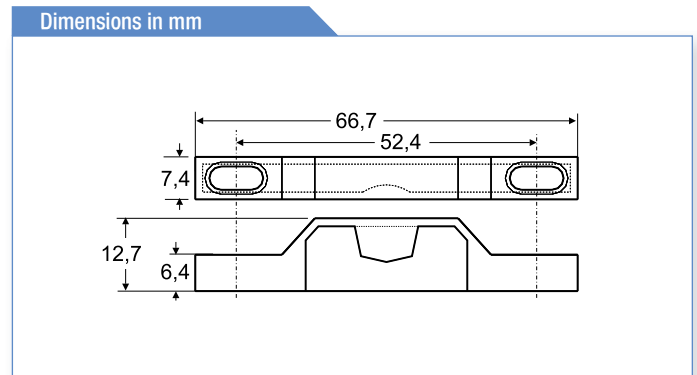
### Additional information

- Sturdy zinc die cast construction
- Used with locks:  
6-C1181-2C-0-7  
6-C1183-2C-0-7
- Use #6 screws

### Keeper for locks with alignment guides

Description	Color	PU	Part Number
Keeper 7,4 mm width	White	200	9-C1181-2C-0-7

\* = Color      PU = Packaging Unit



9-C1183-2C-0-7

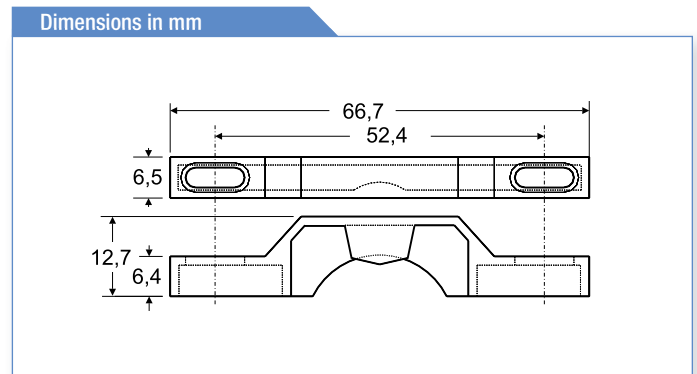
### Additional information

- Sturdy zinc die cast construction
- Used with locks:  
6-C1181-2C-0-7  
6-C1183-2C-0-7
- Use #6 screws

### Keeper for locks with alignment guides

Description	Color	PU	Part Number
Keeper 6,5 mm width	White	200	9-C1183-2C-0-7

\* = Color      PU = Packaging Unit



## Sash lock keepers



### Additional information

- Sturdy zinc die cast construction
- Used with locks:  
6-C1182-2C-0-7  
6-C1184-2C-0-7
- Use #6 screws

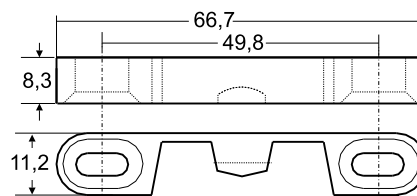
### Keeper for locks

Description	Color	PU	Part Number
Keeper 8,3 mm width	White	200	9-C1184-2C-0-7

\* = Color

PU = Packaging Unit

### Dimensions in mm



01  
1



### Additional information

- Sturdy zinc die cast construction
- Used with locks:  
6-C1182-2C-0-7  
6-C1184-2C-0-7
- Use #6 screws

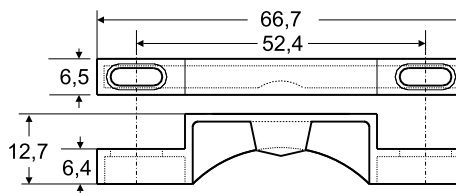
### Keeper for locks

Description	Color	PU	Part Number
Keeper 6,5 mm width	White	200	9-C1185-2C-0-7

\* = Color

PU = Packaging Unit

### Dimensions in mm



### Additional information

- Sturdy zinc die cast construction
- Used with locks:  
6-C1182-2C-0-7  
6-C1184-2C-0-7
- Use #6 screws

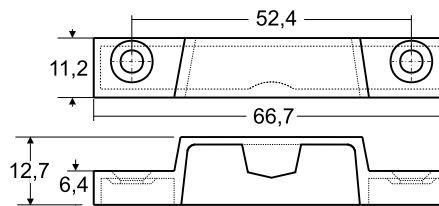
### Keeper for locks

Description	Color	PU	Part Number
Keeper 11,2 mm width	White	200	9-C1186-2C-0-7

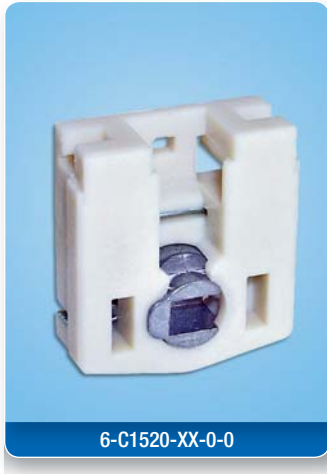
\* = Color

PU = Packaging Unit

### Dimensions in mm



## Brake shoe and retainer clip



6-C1520-XX-0-0

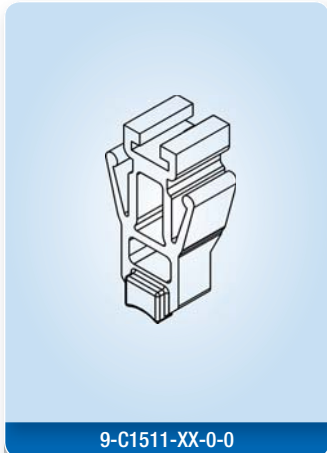
### Side locking brake shoe and pivot bar retainer clips

Description	Color	PU	Part Number
Side locking brake shoe	Ivory	200	6-C1520-2C-0-0
		1000	6-C1520-1M-0-0
Pivot bar retainer clip	Ivory	200	9-C1511-20-0-0
		1000	9-C1511-00-0-0
Pivot bar retainer clip with bumper	Ivory	200	6-C1510-2C-0-0
		1000	6-C1510-1M-0-0

\* = Color      PU = Packaging Unit

### Additional information

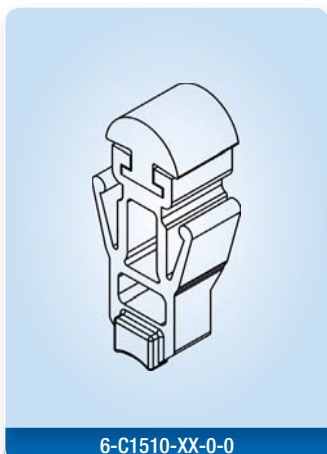
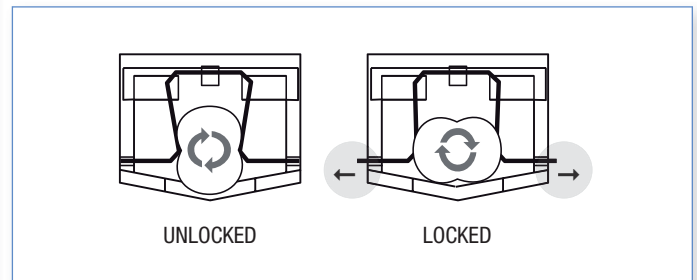
- Brake shoe made of fiberglass reinforced nylon
- Spring slots closer to center of shoe to reduce torsion of shoe in track
- Reinforced spring slot designed to withstand greater pull force
- All edges are rounded to reduce friction
- Side locking shoe with metal brake
- Optional retainer clip (recommended)



9-C1511-XX-0-0



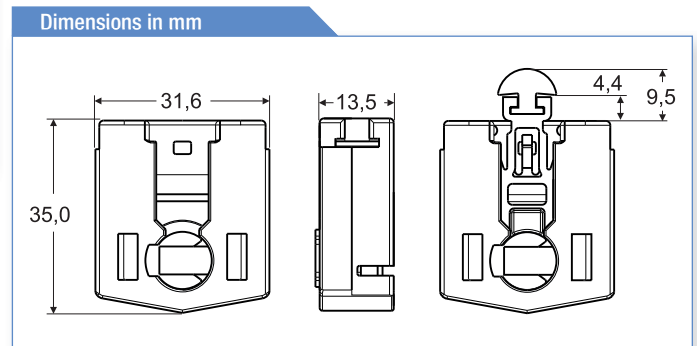
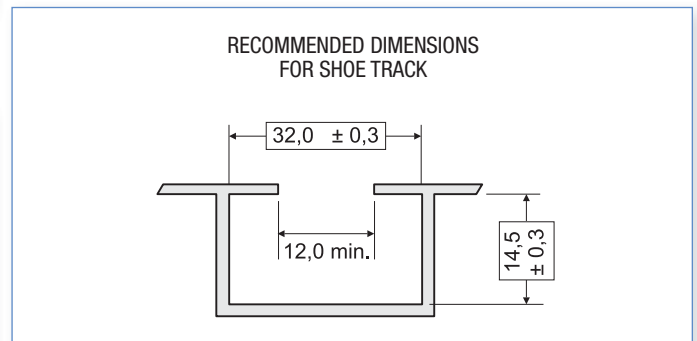
Retainer clip



6-C1510-XX-0-0



Retainer clip with bumper



## Brake shoe and retainer clip for constant force



### Front and side locking brake shoe and pivot bar retainer clip

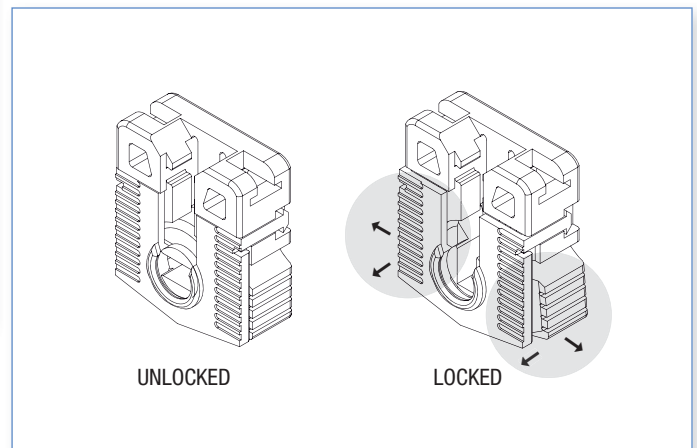
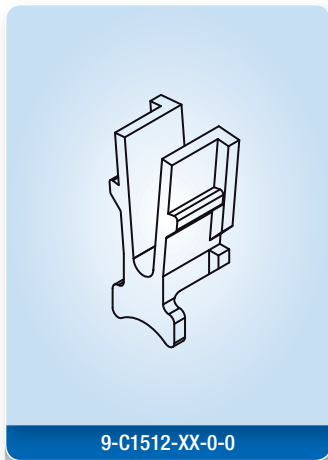
Description	Color	PU	Part Number
Front and side locking brake shoe	Ivory	200	6-C1523-2C-0-0
		1000	6-C1523-1M-0-0
Pivot bar retainer clip	Ivory	200	9-C1512-2C-0-0
		1000	9-C1512-1M-0-0

\* = Color      PU = Packaging Unit

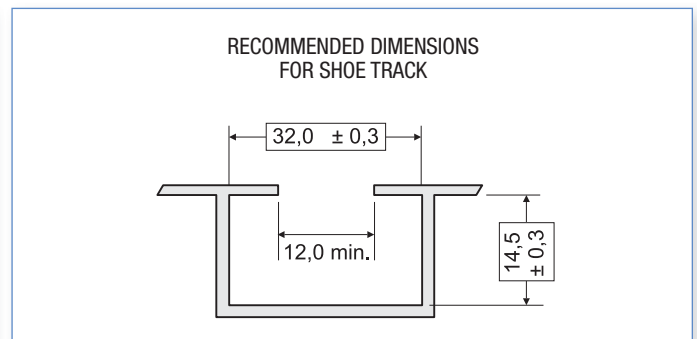
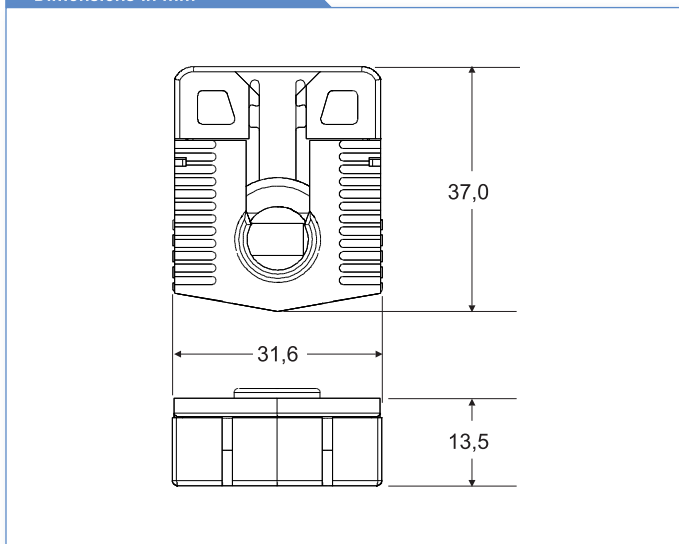
01  
1

#### Additional information

- Brake shoe made of fiberglass reinforced nylon
- Spring slots closer to center of shoe to reduce torsion of shoe in track
- Reinforced spring slot designed to withstand greater pull force
- All edges are rounded to reduce friction
- Can be used for horizontal sliders
- Brake will engage with as little as 15° of sash turn
- Optional retainer clip (for horizontal sliders mandatory)



#### Dimensions in mm



## Coil springs



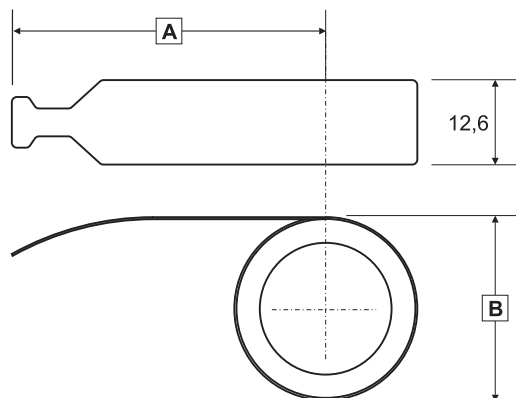
Constant force coil springs

### Additional information

- Stainless Steel 304
- Weight range – 3 lbs to 8 lbs
- Stamped with weight for easy identification
- To be used with monobloc cassettes or standard spring support

### Dimensions in mm

A = Short tail 23,0 – Medium tail 58,0 – Long tail 104,0  
 B = Range 27,5 to 31,5



### Constant force coil springs

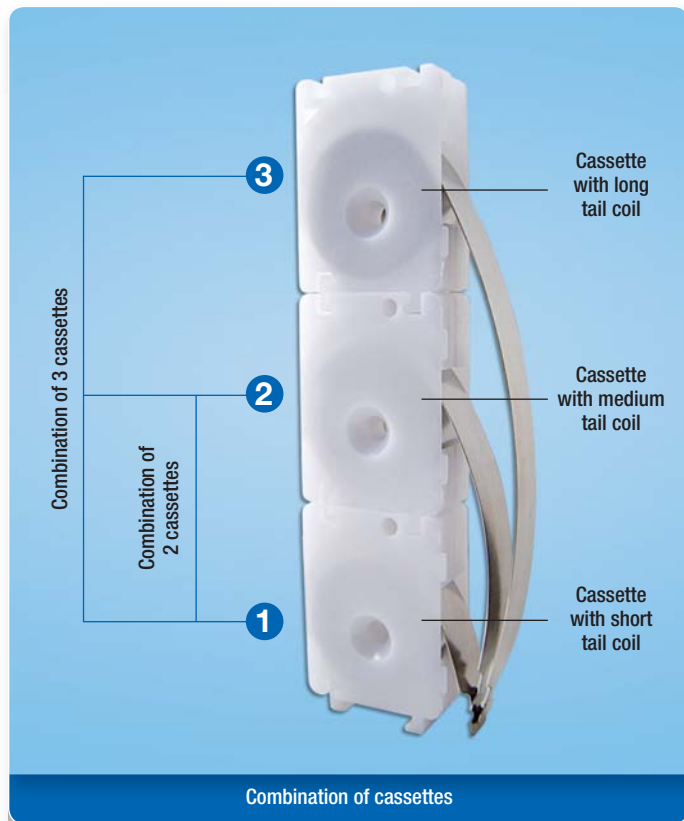
Description	Weight (lbs)	Color	PU	Part Number
Coil with short tail	3*	Stainless Steel	100	9-C1531-1C-0-0
			500	9-C1531-5C-0-0
	4	Stainless Steel	100	9-C1541-1C-0-0
			500	9-C1541-5C-0-0
	5	Stainless Steel	100	9-C1551-1C-0-0
			500	9-C1551-5C-0-0
	6	Stainless Steel	100	9-C1561-1C-0-0
			500	9-C1561-5C-0-0
7	Stainless Steel	100	9-C1571-1C-0-0	
		500	9-C1571-5C-0-0	
8	Stainless Steel	100	9-C1581-1C-0-0	
		500	9-C1581-5C-0-0	
Coil with medium tail	3	Stainless Steel	100	9-C1532-1C-0-0
			500	9-C1532-5C-0-0
	4	Stainless Steel	100	9-C1542-1C-0-0
			500	9-C1542-5C-0-0
	5	Stainless Steel	100	9-C1552-1C-0-0
			500	9-C1552-5C-0-0
	6	Stainless Steel	100	9-C1562-1C-0-0
			500	9-C1562-5C-0-0
7	Stainless Steel	100	9-C1572-1C-0-0	
		500	9-C1572-5C-0-0	
8	Stainless Steel	100	9-C1582-1C-0-0	
		500	9-C1582-5C-0-0	
Coil with long tail	3	Stainless Steel	100	9-C1533-1C-0-0
			500	9-C1533-5C-0-0
	4	Stainless Steel	100	9-C1543-1C-0-0
			500	9-C1543-5C-0-0
	5	Stainless Steel	100	9-C1553-1C-0-0
			500	9-C1553-5C-0-0
	6	Stainless Steel	100	9-C1563-1C-0-0
			500	9-C1563-5C-0-0
7	Stainless Steel	100	9-C1573-1C-0-0	
		500	9-C1573-5C-0-0	
8	Stainless Steel	100	9-C1583-1C-0-0	
		500	9-C1583-5C-0-0	

\* Only available on special request

\* = Color

PU = Packaging Unit

## Cassette



### Additional information

- Cassette made of acetal
- Spring made of Stainless Steel 304
- Weight range – 3 lbs to 8 lbs
- Stamped with weight for easy identification
- Can stack up to 3 cassettes with coils

### Cassette with constant force coil springs

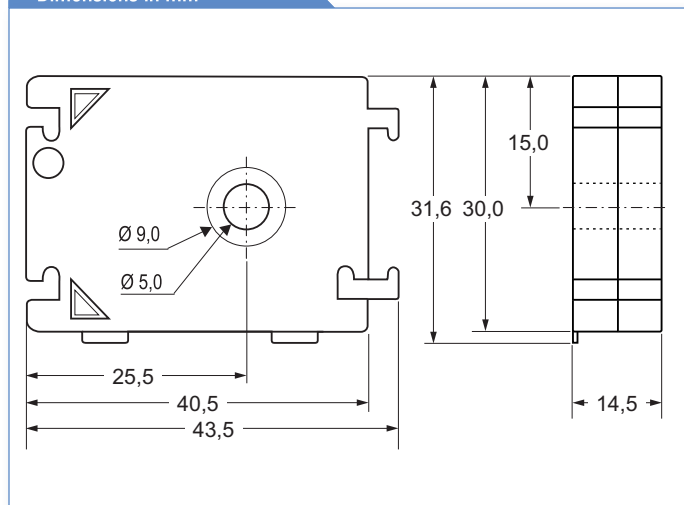
Description	Weight (lbs)	Color	PU	Part Number
Cassette with short tail coil	3*	White	100	6-C1531-1C-0-0
			500	6-C1531-5C-0-0
	4	White	100	6-C1541-1C-0-0
			500	6-C1541-5C-0-0
	5	White	100	6-C1551-1C-0-0
			500	6-C1551-5C-0-0
	6	White	100	6-C1561-1C-0-0
			500	6-C1561-5C-0-0
Cassette with medium tail coil	7	White	100	6-C1571-1C-0-0
			500	6-C1571-5C-0-0
	8	White	100	6-C1581-1C-0-0
			500	6-C1581-5C-0-0
	3	White	100	6-C1532-1C-0-0
			500	6-C1532-5C-0-0
	4	White	100	6-C1542-1C-0-0
			500	6-C1542-5C-0-0
Cassette with long tail coil	5	White	100	6-C1552-1C-0-0
			500	6-C1552-5C-0-0
	6	White	100	6-C1562-1C-0-0
			500	6-C1562-5C-0-0
	7	White	100	6-C1572-1C-0-0
			500	6-C1572-5C-0-0
	8	White	100	6-C1582-1C-0-0
			500	6-C1582-5C-0-0

\* Only available on special request

\* = Color

PU = Packaging Unit

### Dimensions in mm



## Cassette



9-C1521-XX-0-0

### Additional information

- Made of white acetal
- Can be combined with the tandem support for 3 coils
- Self locating coil tabs inside cassette
- Oversize spacers allow for extra coil room
- To be used with constant force spring coils

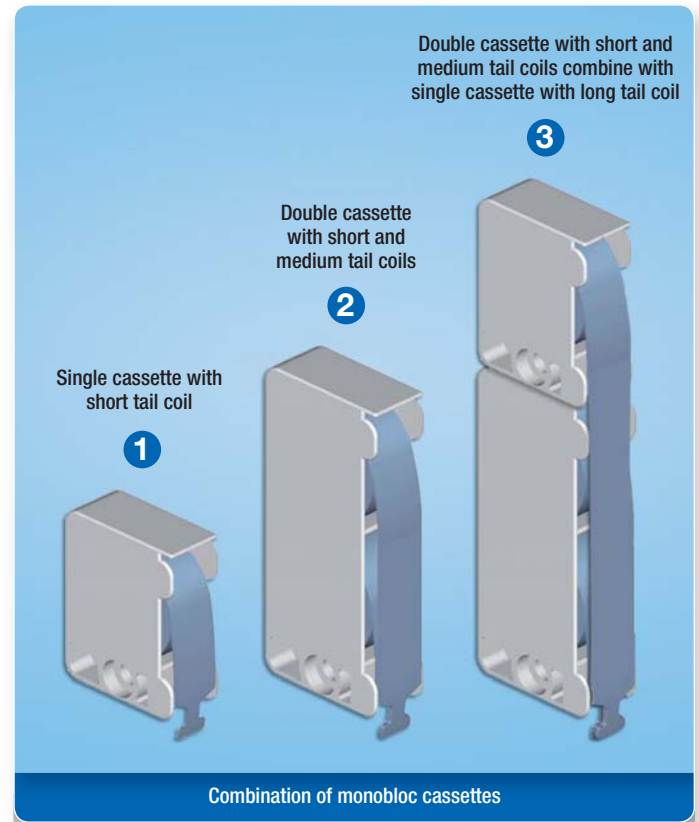


9-C1522-XX-0-0

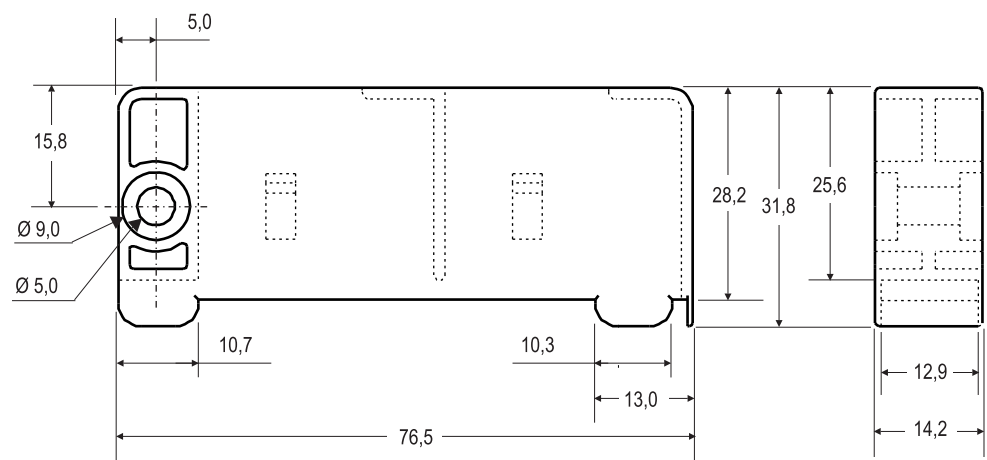
### Monobloc cassettes for coil springs

Description	Color	PU	Part Number
Single cassette	White	200	9-C1521-2C-0-0
		1000	9-C1521-1M-0-0
Double cassette	White	200	9-C1522-2C-0-0
		1000	9-C1522-1M-0-0

\* = Color      PU = Packaging Unit



### Dimensions in mm



## Coil holder



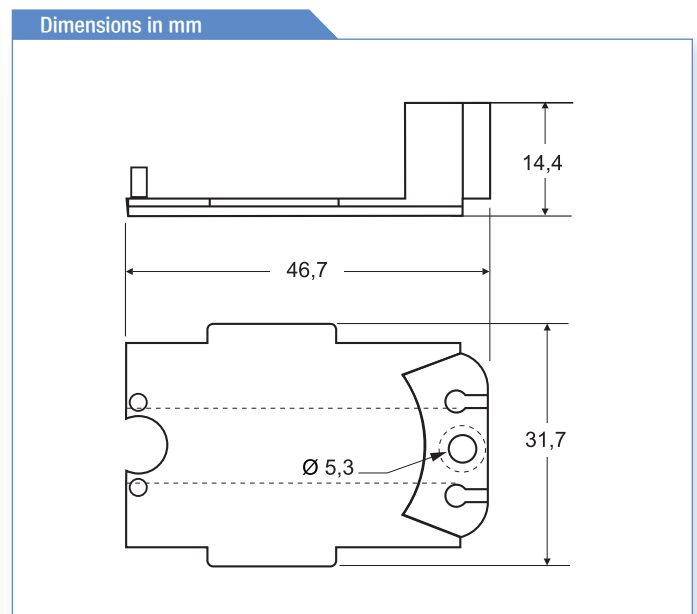
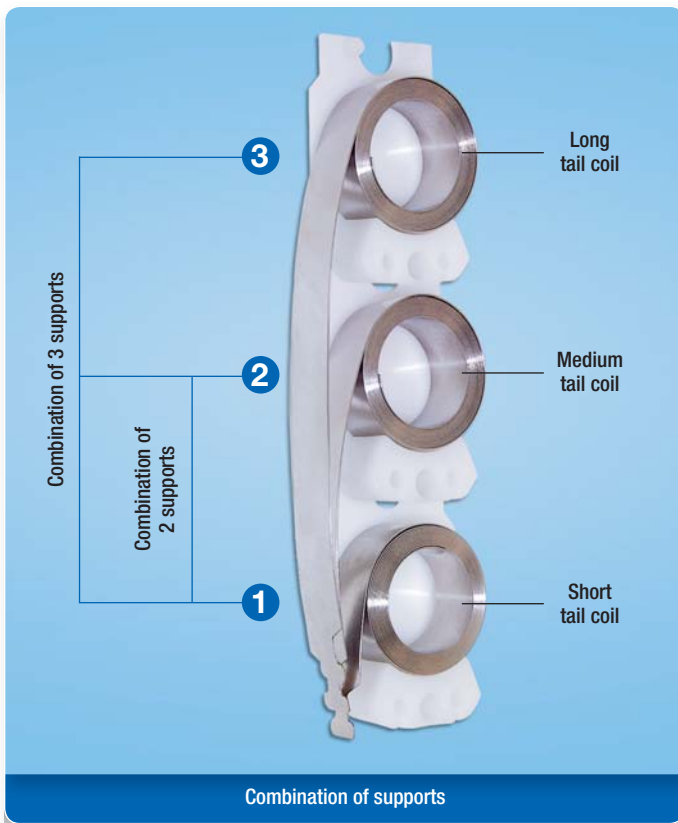
### Standard support for coil springs

Description	Color	PU	Part Number
Support	White	200	9-C1500-2C-0-0
		1000	9-C1500-1M-0-0
		* = Color	PU = Packaging Unit

### Additional information

- Made of white acetal
- Can be combine up to 3 supports
- To be used with constant force spring coils

01  
1



## Accessories



9-C1504-XX-0-8

### Additional information

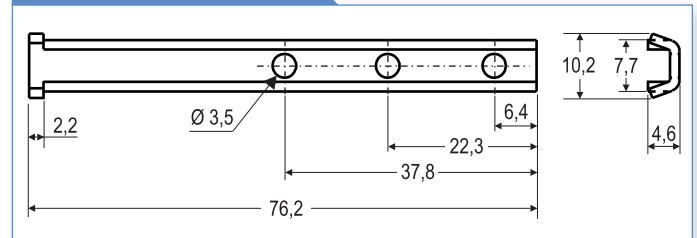
- Made of Stainless Steel
- Use with brake shoe
- Use #6 x 12 pan screws

### Stainless Steel pivot bar

Description	Color	PU	Part Number
Pivot bar	Stainless Steel	200	9-C1504-2C-0-8
		1000	9-C1504-1M-0-8

\* = Color      PU = Packaging Unit

### Dimensions in mm



9-C1506-XX-0-0

### Additional information

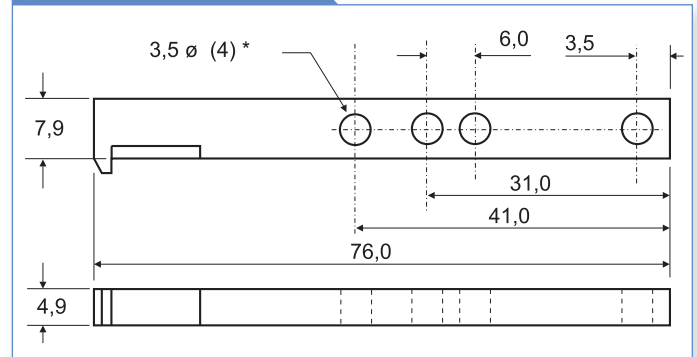
- "Zamak" metal casting
- Use with brake shoe
- Use #6 x 12 pan screws

### "Zamak" pivot bar

Description	Color	PU	Part Number
Pivot bar	Zamak	200	9-C1506-2C-0-0
		1000	9-C1506-1M-0-0

\* = Color      PU = Packaging Unit

### Dimensions in mm



9-C1508-XX-0-0

### Additional information

- Polyethylene foam
- Use to eliminate the accumulation of debris that can sit on the extended coil
- Dimensions:  
Width: 32,0 mm  
Depth: 16,0 mm  
Height: 12,7 mm

### Dust cover

Description	Color	PU	Part Number
Dust cover	White	200	9-C1508-2C-0-0
		1000	9-C1508-1M-0-0

\* = Color      PU = Packaging Unit